



MONTHLY MEMBERSHIP PROGRESS REPORT

District 22 W

Results as of: 04/30/2018

GMT: MAHESH CHITNIS

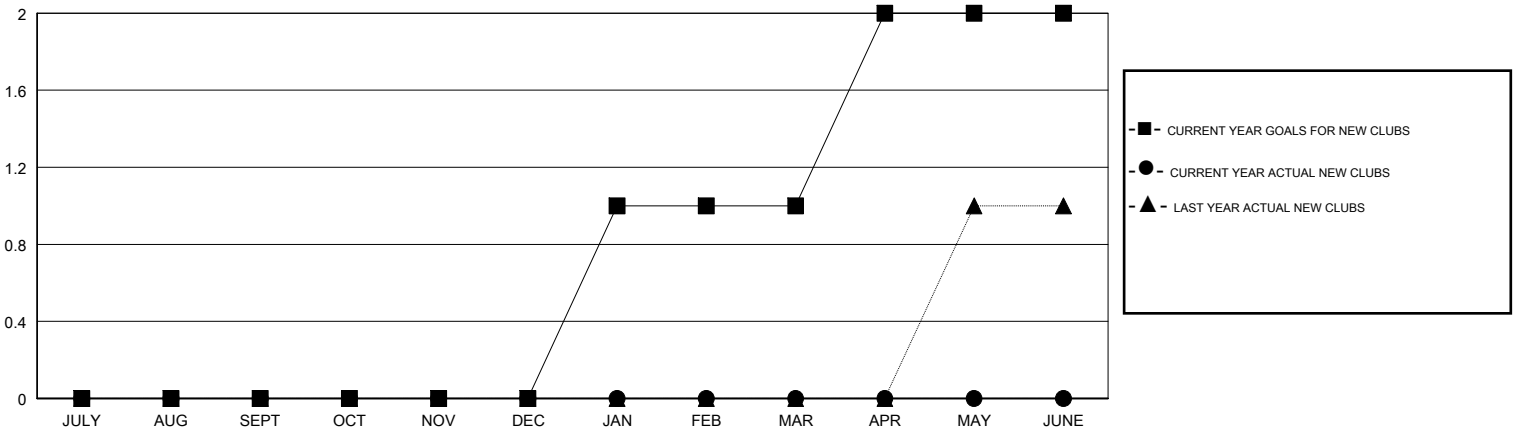
LOCATION MARYLAND

GMT CA

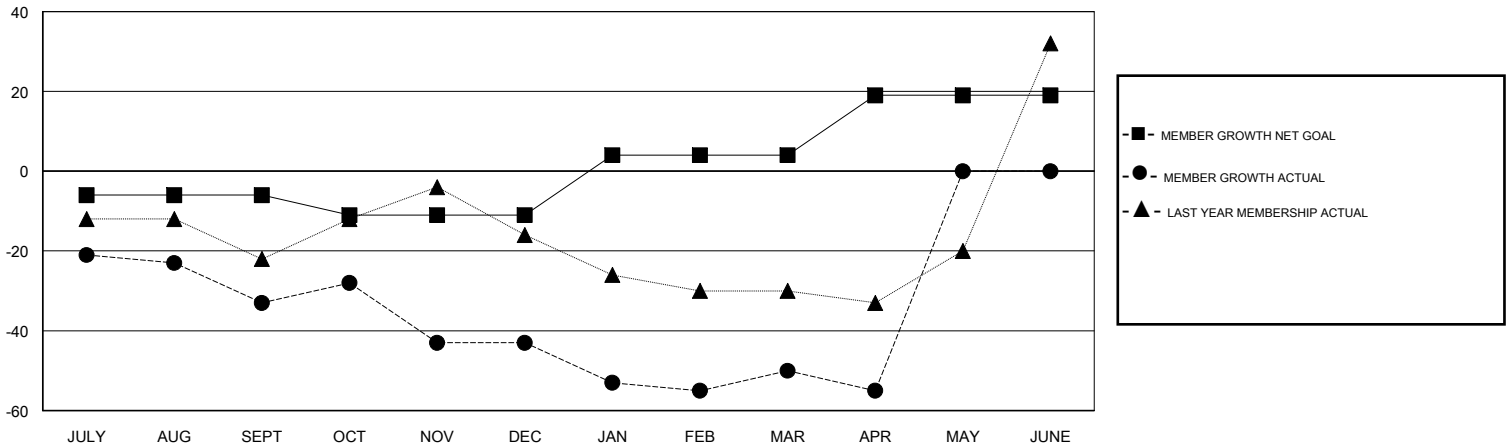
Clubs			
RESULTS FOR 2017-2018			
QUARTER	NEW CLUB GOAL	NEW CLUBS	DROPPED CLUBS
JULY/AUG/SEPT	0	0	0
OCT/NOV/DEC	0	0	0
JAN/FEB/MAR	1	0	0
APR/MAY/JUNE	1	0	1

Members			
RESULTS FOR 2017-2018			
QUARTER	MEMBER GROWTH NET GOAL	MEMBER GROWTH ACTUAL	DROPPED MEMBERS ACTUAL (including transfers)
JULY/AUG/SEPT	-6	29	56
OCT/NOV/DEC	-5	46	52
JAN/FEB/MAR	15	53	56
APR/MAY/JUNE	15	19	24

GOALS AND ACTUAL NEW CLUBS CUMULATIVE



GOALS AND ACTUAL MEMBERS CUMULATIVE



DROPPED CLUBS: 1	41 CLUBS OF 59 ADDED 1 OR MORE NEW MEMBERS	<u>GENDER DISTRIBUTION</u>	
DROPPED MEMBERS		MALE	1,242 (64.65%)
DECEASED	26	FEMALE	679 (35.35%)
CLUB CANCELLED	10	Women Percentage Fiscal Year Goal: 36%	
OTHER	152	TOTAL FAMILY UNIT MEMBERS	511
TOTAL	188	FAMILY MEMBERS PAYING HALF DUES	267

[CLICK HERE FOR CUMULATIVE MEMBERSHIP DATA](#)